

Glasfaser - Lichtleitkabel WRB1



Taster

Adapter

WRB1

Kabellänge

600 mm = **120**

1000 mm = **130**

Option :
300 (110) / 2000mm (150)

**Material
Ummantelung**

S Silikon-Metallwendel / bis + 180 °C

M Metallwendel / bis +180°C



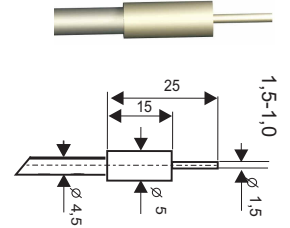
Tastkopf

V2A

Bestellbezeichnung

WRB1 -120-S-1,5-1,0
WRB1 -120-M-1,5-1,0

WRB1 -130-S-1,5-1,0
WRB1 -130-M-1,5-1,0

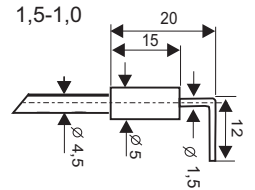
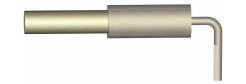


600

1000

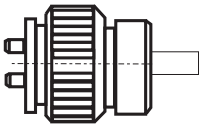
WRB1 -120-S-90-1,5-1,0
WRB1 -120-M-90-1,5-1,0

WRB1 -130-S-90-1,5-1,0
WRB1 -130-M-90-1,5-1,0



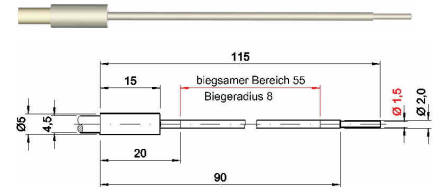
600

1000



WRB1 -120-SB-2,0-1,5-100

WRB1 -130-SB-2,0-1,5-100

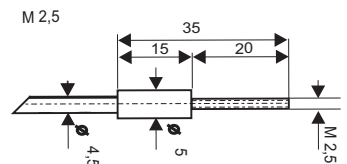


600

1000

WRB1 -120-S-M2,5-1,5
WRB1 -120-M-M2,5-1,5

WRB1 -130-S-M2,5-1,5
WRB1 -130-M-M2,5-1,5

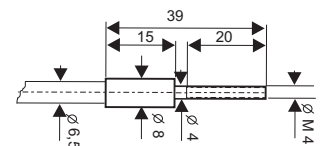


600

1000

WRB1 -120-S-M4-2,5
WRB1 -120-M-M4-2,5

WRB1 -130-S-M4-2,5
WRB1 -130-M-M4-2,5



600

1000



Glasfaser - Lichtleitkabel WRB1



Taster

Adapter

WRB1

Kabellänge

600 mm = **120**

1000 mm = **130**

Option :
300 (110) / 2000mm (150)

**Material
Ummantelung**

S Silikon-Metallwendel / bis + 180 °C

M Metallwendel / bis +180°C



Tastkopf

V2A

Bestellbezeichnung

WRB1 -120-S-90-4,0-2,5

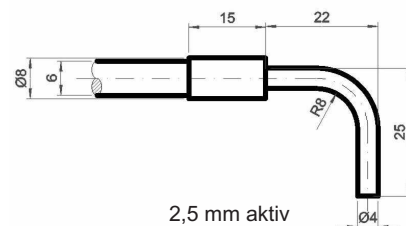
WRB1 -120-M-90-4,0-2,5

WRB1 -130-S-90-4,0-2,5

WRB1 -130-M-90-4,0-2,5

600

1000



WRB1 -120-SR-8,0-2,5

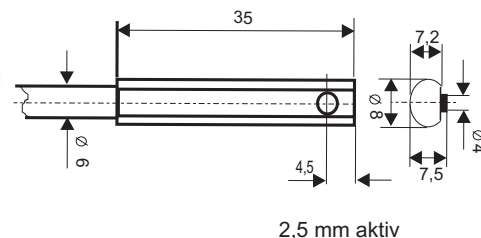
WRB1 -120-MR-8,0-2,5

600

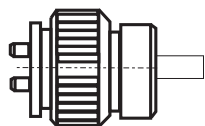
WRB1 -130-SR-8,0-2,5

WRB1 -130-MR-8,0-2,5

1000



2,5 mm aktiv



600

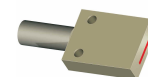
WRB1 -120-SQ-10-0,6

WRB1 -120-MQ-10-0,6

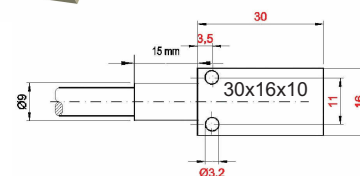
1000

WRB1 -130-SQ-10-0,6

WRB1 -130-MQ-10-0,6



aktiv 10x0,6



600

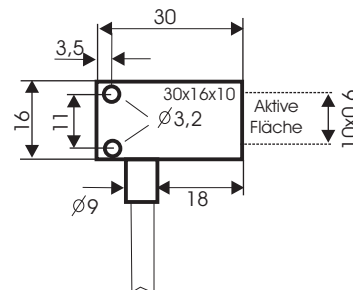
WRB1 -120-SQ-10-0,6

WRB1 -120-MQ-10-0,6

1000

WRB1 -130-SQ-10-0,6

WRB1 -130-MQ-10-0,6



600

WRB1 -120-SQ-20-0,6

WRB1 -120-MQ-20-0,6

1000

WRB1 -130-SQ-20-0,6

WRB1 -130-MQ-20-0,6

